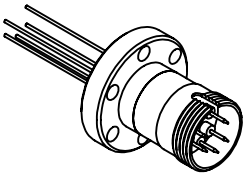
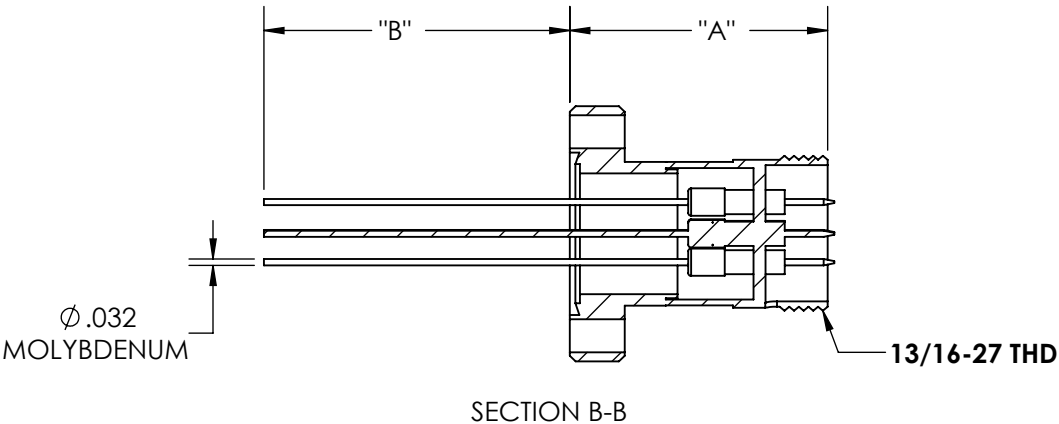
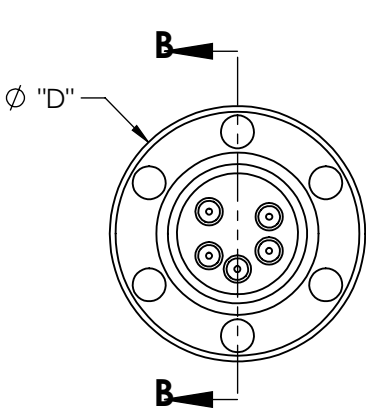
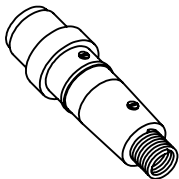


A1620

REV
4/28/2014



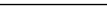
PART#	# OF PINS	"A"	"B"	"D"
A1620-1-CF	5	1.34	1.58	1.33
A1620-2-CF	5	.89	2.03	2.75
A1620-3-CF	7	1.34	1.58	1.33
A1620-4-CF	7	.89	2.03	2.75



APPROVED

Multipin Feedthrough, 5, 7 Pins, 500 Volts, 3.5 Amps per Pin, 0.032" Dia Conductors, 1.33, 2.75" Conflat Flange

TITLE:
MULTIPIN, 5, 7 PIN,
500V, 3.5A, 1.33CF, 2.75CF

PROPRIETARY AND CONFIDENTIAL		UNLESS OTHERWISE SPECIFIED:				MPF PRODUCTS INC.			500V, 3.5A, 1.33CF, 2.75CF		
ANY REPRODUCTION IN PART OR AS A WHOLE WITHOUT THE WRITTEN PERMISSION OF MPF PRODUCTS INC. IS PROHIBITED.		DIMENSIONS ARE IN INCHES TOLERANCES:		FINISH	DRAWN BY	JB	DATE	SIZE A	DWG. NO. A1620	REV	
				QUICK FLANGE	CHECKED					4/28/2014	
USED ON:		ANGULAR: MACH ± 1/2 ° TWO PLACE DECIMAL THREE PLACE DECIMAL	±.030 ±.015	DO NOT SCALE DRAWING	ENG APPR.	JB		LAST SAVED DATE	Thursday, April 11, 2013 7:08:03 AM		