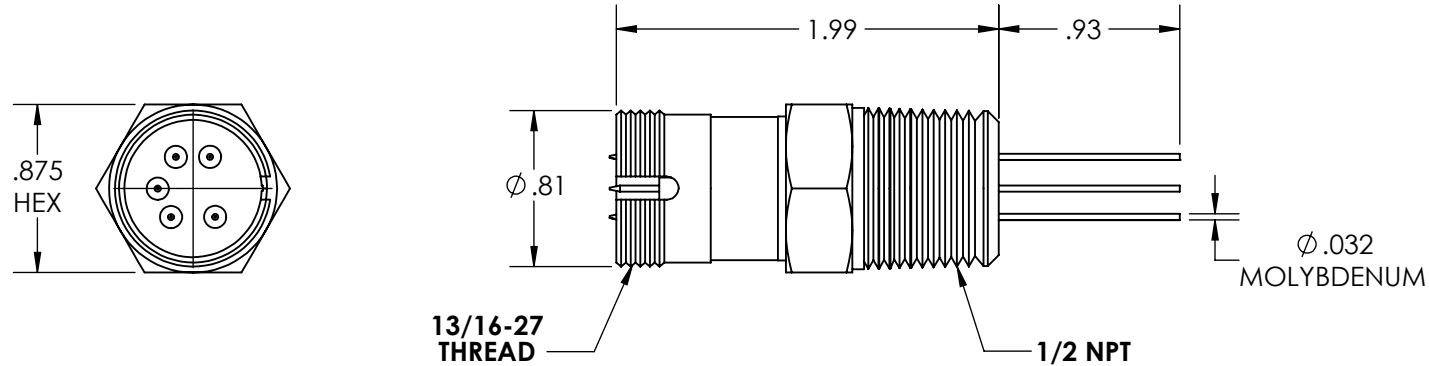
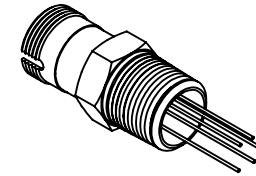


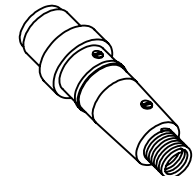
A1624

REV

5/5/2014



| PART#       | QTY OF PINS |
|-------------|-------------|
| A1624-1-NPT | 5           |
| A1624-2-NPT | 7           |



APPROVED

Multipin Feedthrough, 5,7 Pins, 500 Volts, 3.5 Amps per Pin, 0.032" Dia Conductors, 0.5" NPT

TITLE:

MULTIPIN, 5,7 PIN,  
500V, 3.5A, 1/2 NPT

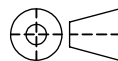
PROPRIETARY AND CONFIDENTIAL

UNLESS OTHERWISE SPECIFIED:

MPF PRODUCTS INC.

ANY REPRODUCTION IN PART OR AS A WHOLE WITHOUT THE  
WRITTEN PERMISSION OF MPF PRODUCTS INC. IS PROHIBITED.

USED ON:

DIMENSIONS ARE IN INCHES  
TOLERANCES:ANGULAR: MACH  $\pm 1/2^\circ$   
TWO PLACE DECIMAL  
THREE PLACE DECIMAL $\pm .030$   
 $\pm .015$ FINISH  
QUICK FLANGE

DO NOT SCALE DRAWING

DRAWN BY

JB

DATE

CHECKED

ENG APPR.

JB

SIZE

A

DWG. NO.

A1624

REV

5/5/2014

LAST SAVED DATE

Monday, May 05, 2014 3:50:57 PM